

**In This Issue**

- [IL600 Eval Board](#)
- [Distributor News](#)
- [Exhibitions](#)
- [Open-Drain Isolators](#)

**Quick Links**

- [Sensor Selector Guide](#)
- [Isolator Selector Guide](#)
- [Online Store](#)
- [Contact Us](#)

**Reference Designs**

A new Webpage consolidates Isolator Reference Designs. The page provides detailed, tested circuits for our most popular applications, including RS-485, PROFIBUS, isolated USB, CAN, and PC.

[Isolator Reference Designs](#)

**Fun Fact**

Less storage space...



IL610-5 monolithic couplers are approximately 0.2 cubic millimeters. An Altoids box could hold more than 500,000 neatly stacked (we don't recommend storing parts in an Altoids box).

[More Fun Facts](#)

**Memorial Day**



NVE will be closed May 28 for Memorial Day.

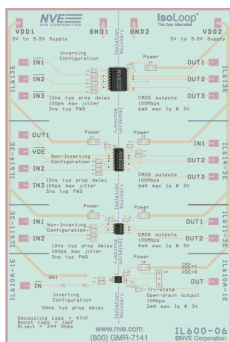
**IL600-Series Evaluation Board**

The new IL600-Series Isolator evaluation board lets you try a variety of NVE's unique IL600-Series Isolators.

The board has four IL600-Series isolators in four package types:

- **IL613E** (wide-body SOIC-16)
- **IL614-3E** (narrow-body SOIC-16)
- **IL611-3E** (SOIC-8)
- Open-drain **IL610A-1E** (MSOP-8)

A pushbutton and LED demonstrates the unmatched flexibility of these devices.



**IL600-Series Evaluation Board**

The award-winning IL600 and IL600A Series Isolators provide unique passive inputs for flexibility similar to LED-input optocouplers but better performance and higher package density than optocouplers. And their real ceramic/ polymer barriers last pretty much forever.

NVE also recently introduced the popular [IL700-Series Evaluation Boards](#).

[Buy Online](#)  
\$9.95 shipping

**New Distributor Name**

Long-time NVE sensor distributor HY-LINE Sensor-Tech is now IS-LINE. The new name reflects the firm's focus on "intelligent sensor" systems. The same experts who have been supporting NVE customers in Germany, Austria, and Switzerland for many years remain with the renamed firm.



**Upcoming Exhibitions**

Powerful, intelligent NVE products will be on display at Power Conversion and Intelligent Motion ("PCIM") Europe 2012 in Nürnberg, Germany. See us May 8 to 10 in the HY-LINE Power booth.



[Free Registration Courtesy HY-LINE Power](#)



NVE sensors will be on display at **Sensor+Test 2012** May 22 to 24 in Nürnberg, Germany. NVE will exhibit in cooperation with distributor IS-LINE.

**Application Corner**

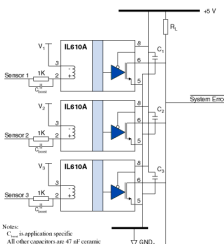
**IL600-Series Isolators**

IsoLoop Isolators match optocoupler versatility but have smaller packages, less distortion, better reliability, and unlimited life.

IL600A-Series passive-input isolators are designed to be opto replacements with inputs similar to LEDs and outputs similar to phototransistors.

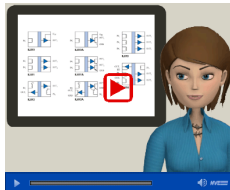
Inputs can be configured for inverting or non-inverting operation and accommodate a wide input voltage range. Versions are available with either CMOS or open-drain outputs.

Open-drain outputs can be wire-ORed together much like an optocoupler:



This illustrative circuit provides fail-safe output (logic high output for zero input current), 2.5 kVrms isolation, and 20 kV/µs transient immunity. Typical logic output sink current is 10 mA for each isolator.

For more information, you can watch this [technical video](#):



[Video: IL600 Isolators](#)

[Email the Applications Desk](#)

[Buy Online](#)  
\$9.95 shipping